

Professional CFM Series



The open designed for easy access to the working area and movement of marking objects.

Sturdy & rugged designed M.S. structure for years of operation.

Auto head adjustment for positioning samples.

Standard Joystick for easy operation.

The Open LASER Marker is also equipped with optional rotary axis device which facilitates LASER Markings on curved surfaces such as the inner or the outer face of rings, bangles and bracelets.

The "OPEN" Laser Marker is able to meet the highest standards of quality set by the most renowned producers of high-end jewellery.

It is perfect for engraving all types of precious and semi-precious metals, steel, titanium and many other materials, metallic and non.

Fiber Laser Marking Machine

Technology

Based on Ytterbium Fiber Laser Which is highly reliable laser source.

Marking

Able to mark all metal and some non-metal materials. marking minimum lines width of 0.03 mm, minimum height of 0.3 mm for english characters and depth of up to 1mm*

Dependability

Sturdy frame structure for lowest vibration and trouble free operation makes it ideal for continues operation like Hallmarking Centers & Jewellery Factories*.

Convenience

Latest Air Cool Technology makes this machine work on a low power consumption of below 800W* thus makes it most energy savings.

Compact

Ergonomically designed & can easily connect with Laptop (Optional), make this machine very compact & can be placed on workstation, taking up a small working space convenient to use for small factories & showrooms.

Ease

Support for auto-coding, serial number, batch number, date bar code and two dimensional codes.

Compatibility

WINDOWS based marking software, able to read CORELDRAW, AUTOCAD, PHOTOSHOP and other commonly used graphic files, such as AI, PLT, DXF, BMP, JPEG.

Flexibility

Optional Motorised Rotary Marking Device for accurate & continuous 360° marking inside or outside bangles & Rings.

Low Maintenance

Complete enclosed laser module design with the optical fiber transmission pump light source & air cooling systems, which offers better protection for the laser devices hence reducing the failure rate.



Tools



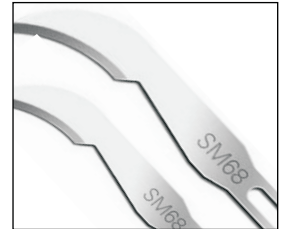
Watches



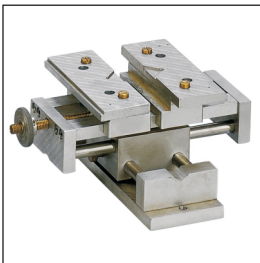
Switches



Seal & Tag



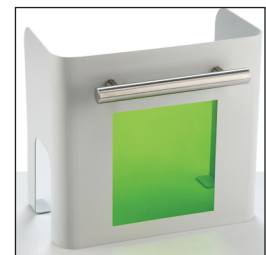
Surgical Blades



Zig



Rotary



Optional Accessories
Eye Protector

Model	CFM 20F
Laser Source	Ytterbium Pulsed Fiber Laser
Laser Power	20W
Wavelength	1064 nm
Beam Quality M ²	< 1.6
Pulse Repetition Rate	20 Hz - 100KHz
Marking Area (mm)	70 x 70 / 100 x 100 (Optional)
Marking Speed	< 7000 mm/sec
Laser Frequency	20 - 100 kHz
Cooling System	Air Cooling
Minimum Width	0.03 mm
Minimum Character	0.3 mm
Repeatability	0.003 mm
Power Consumption	800 W
Power Supply	220 V AC, 60 Hz / 1P / 4A or 110V / 50Hz / 1P / 8A
Working Bed (L x W)	348 x 255
Dimension (LxWxH)	625 x 400 x 632
Net Weight	45 kg