

LCD Display

S.S Enclosure



Introduction

Aczet Weighing indicator adopts fast speed, high precision

Σ - Δ A/D conversion technology and special anti-vibration software technology, widely applied in electronic platform scale, electronic floor scale, mechanic-electronic conversion scale and so on a like static weighing system equipped with 1~4 load cell.



Dolly Weighing Indicator

CTG Series

Technical parameter

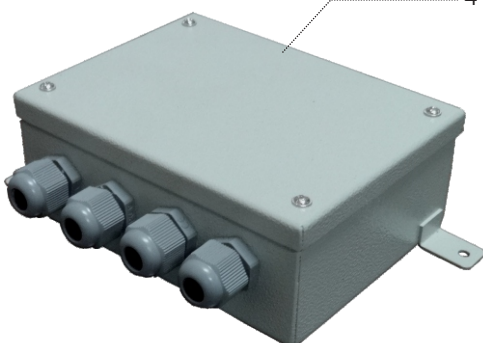
- A/D conversion method: Σ - Δ
- A/D conversion speed: 10 times/sec.
- Max. A/D conversion bits: 20
- Input signal range: -10mV~15mV
- Input sensitivity: =1 μ V/e
- Load cell excitation: DC 5V; $I \leq 150$ mA
- Max. connection number of load cell: 4 at 350 ohm
- Load cell connection mode: 6 wire
- Max. external counts: 30000
- Max. internal resolution: 300000
- Division: 1/2/5/10/20/50 optional
- Display: Backlit LCD display
- Transmission distance: Current loop ≤ 2000 meters
- Interface type: RS232C serial communication interface, with selectable baud rate by continuous sending method or on command method
- Baud rate seletable: 1200/2400/4800/9600
- Transmission distance: RS232C ≤ 30 meters
- Power supply: AC 187~242V, 49~51Hz; DC built-in rechargeable 6V/4AH battery
- Large remote display size 2"

Standard function

- High precision A/D conversion with readability 1/30000
- Call and display inner code to replace weight observing and analysis tolerance
- Special digital filtering technology to strengthen anti-vibration ability
- Able to set up zero-tracking range, zero (auto/manual) range
- With counting function (unit weight data save protection in case of power off)
- Selectable backlight mode
- Alarm for low battery and auto power off at low battery
- RS232 interface with selectable baud rate and communication method
- Option of scoreboard interface sending by 20mA current loop
- Kg/Lb switch function

Junction Box

4 way summation box



Junction Box:	
Protection Class	IP 65 / 66
Surge Protection	Surge arrestors provided within junction box
Connection Type	Terminals on PCB mounted inside the JB.
MOC	ABS / Stainless Steel / Mild Steel